

SAFETY MESSAGE

August is Back-to-School Safety Month, so let's remember to play it safe as we begin a new school year. Keep these driving tips in mind:

- A friendly reminder to slow down as you drive through residential areas and school zones.
- Remember to give school buses space and stop when you see red lights flashing.
- If your little ones ride the bus, remind them to load and unload in front of the school bus (never behind) so the driver always has a clear view of passengers.

Briefing of the Board Meeting

May 20, 2025

Board Action Items:

- Approved April board vouchers
- Approved board policy
- Approved CFC voting delegate

View the full meeting summary on our website: www.acecwi.com/news-information/meeting-mins

ENERGY EFFICIENCY TIP OF THE MONTH

Replace your cooling system's filter regularly to maintain strong airflow and boost energy efficiency. A clean filter means your system doesn't have to work as hard, saving energy and lowering your utility bills.

Factors like allergies and pets in the home can impact how often filters should be replaced.

Check the filter every month and replace it as needed. Changing filters regularly also reduces wear and tear on your cooling system, helping extend the life of the unit.

Source: energy.gov

RHUBARB CRUMBLE CAKE

PREP TIME - 20 MINS | COOK TIME - 1 HOUR

INGREDIENTS

- 1 1/2 c packed brown sugar
- 1 1/4 c oatmeal
- 1 1/2 c flour
- 1 1/2 tsp cinnamon
- 3/4 c butter

FILLING

- 4 c rhubarb
- 1 1/2 c sugar
- 3 1/2 Tbsp corn starch
- 1 1/2 c water
- 2 tsp vanilla

INSTRUCTIONS

1. Combine brown sugar, oatmeal, flour, and cinnamon in a bowl. Add butter and mix until crumbly. Put the mixture in the bottom of a 9x13 pan, saving 1 1/2 cups of the crumb mixture for the top.
2. Place rhubarb on top. Mix sugar, corn starch, and water in a sauce pan over medium heat until thick and clear. Add vanilla to the saucepan. Pour mixture over the rhubarb.
3. Sprinkle the remaining crumb mixture on top and drop dots of butter. Bake for 1 hour in a 350 degree oven.

Recipe from Kitty Jeffords of Greenfield, WI



THE WIRE

Adams-Columbia Electric Cooperative • August 2025

Empowering Our Communities

OCTOBER IS CO-OP MONTH

Member Appreciation Open House

SATURDAY, OCTOBER 4

10:00 A.M. - 2:00 P.M.

401 E LAKE ST, FRIENDSHIP, WI

Mark your calendars and join us at our Member Appreciation Open House event to celebrate Co-op Month. All members are invited to attend this free event.

Food and giveaways are available while supplies last.



Free gift for the first 250 members



Lunch will be catered by Moose Inn



Visit our many booths for giveaways & prizes



Enjoy ice cream while learning about your co-op



ACEC contractors attending the event

Adams County Humane Society will be on site with animals available for adoption and will be accepting donations. Some of their most requested items include:



- Printer ink #952 black and color
- Paper towel
- Peanut butter
- Quality dog/cat food
- Clumping cat litter
- Laundry detergent
- Bleach

ENROLL IN PAPERLESS BILLING FOR YOUR CHANCE TO WIN

As we continue to face rising postage costs, we're asking our members to enroll in paperless billing to help ease the cost. And for doing so, you'll be entered to win a \$25 bill credit. Enroll by September 15 for your chance to win!



Log in to your SmartHub account to enroll today. If you need assistance, contact customer service at (800) 831-8629. We'll select two winners for the bill credits, one member who is already enrolled in paperless billing and one member newly enrolled.

CALENDAR OF EVENTS

SEPTEMBER 1

Our office will be closed in observance of Labor Day. Have a safe holiday!

OCTOBER 4

Mark your calendar for our Member Appreciation Open House event.

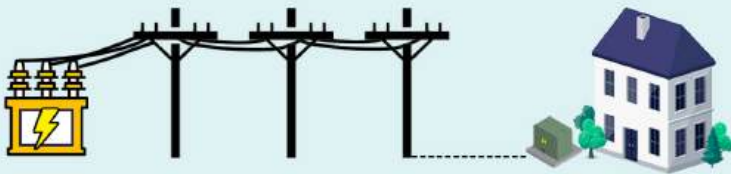
ANSWERING YOUR ELECTRIC SERVICE QUESTIONS

How do power outages occur if the power lines at my house are underground?

Although your home gets power from an underground power line, at some point, the power is transported by an overhead power line from our substation. Overhead power line outages can occur from car accidents, trees falling on our lines, animals, weather, and other causes.



Ground shifting, someone digging and hitting a power line, and weather are a few reasons why buried power lines may fail and cause outages. We have equipment to locate the underground power line outage. At times, hand digging is the answer.



On my way home from work, I noticed some damaged utility equipment. What should I do?

Always report and stay away from damaged utility equipment. Give us a call at (800) 831-8629. If you don't have an exact location, provide the nearest road intersection or fire number. Our crews will investigate and make the necessary repairs.

Examples of damaged equipment include trees on power lines, broken poles or cross arms, dented or opened underground green utility boxes (like transformers and switch points), or damage to our substations or other facilities.



I'm experiencing a power outage and my neighbor down the road has power. Why don't I?

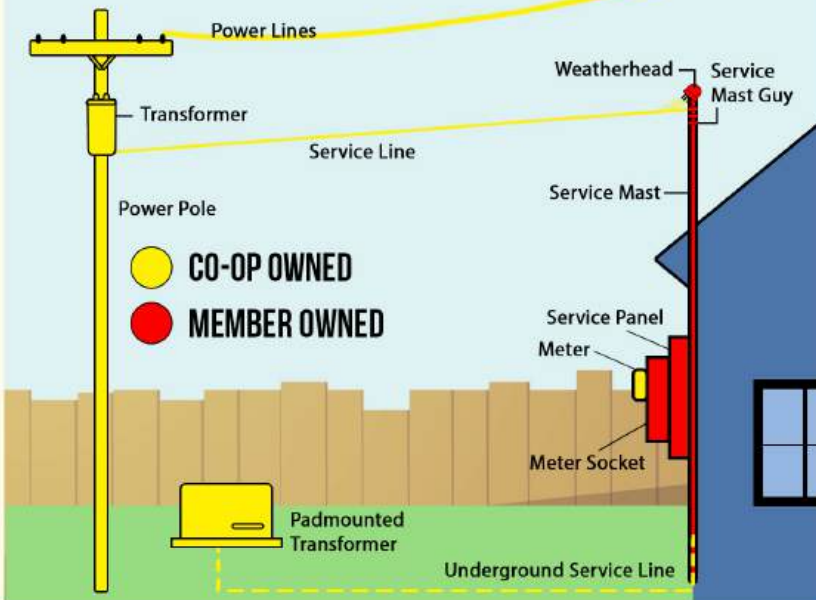
There are a few reasons why your neighbor has power but you don't. Your neighbor may receive their power from different equipment, a different section of power line, or a different substation than you. There may be damaged equipment that only serves your location.

Watch our Power Restoration Process video to learn step-by-step how our crews and staff work to get power restored for all members as quickly and safely as possible. Visit www.youtube.com/watch?v=HruNmZxgUDA to watch our video.



Does the co-op repair my damaged electric equipment after a storm?

We will repair co-op equipment. The image below shows who owns what. If your service mast, meter socket, or service panel is damaged, you'll need to contact a licensed electrician to make repairs before we can energize your electric service.



YOUTH TOUR JOURNEY

June 15-21, we sponsored Ashton Brusveen, Dillan Sztuczko, and Kyra Meisenheimer to attend Youth Tour in Washington D.C. Youth Tour is the national level of Youth Leadership Conference, where students from across the country gather to learn about the cooperative difference.



They visited a variety of museums and monuments, met elected officials, and engaged in other sightseeing activities. Dillan Sztuczko was selected to be the Wisconsin State Representative, where he will attend the National Rural Electric Cooperative Association's (NRECA) Annual Meeting in Nashville in 2026. We're proud to have sponsored this once-in-a-lifetime experience.



SAVE WITH OUR TIME OF DAY RATE

We often hear our members asking, "How can I save on my electric bill?" If adjusting your lifestyle is possible, our time of day rate may be a great fit for you!

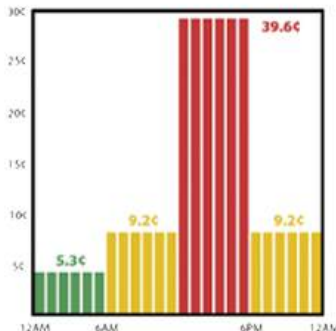
With varying kilowatt-hour (kWh) charges at different times of the day, there's an opportunity for you to save money by using electricity during our Off-Peak time frames.

Visit www.acecwi.com/time-of-day to learn about our time of day rate and to watch our short video explaining how the rate works. To sign up, give us a call at (800) 831-8629.



Off-Peak	5.3¢/kWh
Mid-Peak	9.2¢/kWh
On-Peak	39.6¢/kWh

(SUMMER) MAY 1 - SEPTEMBER 30	
Off-Peak	12:00 a.m. - 6:00 a.m.
Mid-Peak	6:00 a.m. - 12:00 p.m.
On-Peak	12:00 p.m. - 6:00 p.m.
Mid-Peak	6:00 p.m. - 12:00 a.m.



CONTACT US

Customer Service & Billing
(800) 831-8629

Outages & Payments
(855) 957-3881

Diggers Hotline
(800) 242-8511 or 811

Email
acec@acecwi.com

Website
www.acecwi.com

Follow us on social media
@ACECWI

Business Hours
Monday - Friday,
7:30 a.m. – 4:00 p.m.

Friendship Lobby Hours
Monday - Friday,
8:00 a.m. - 3:30 p.m.

Friendship Office
P.O. Box 70
401 East Lake Street
Friendship, WI 53934

Pardeeville Office (Drop Box Only)
W6290 State Road 33
Pardeeville, WI 53954

Wautoma Office (Drop Box Only)
N1519 State Road 22
Wautoma, WI 54982

Did you know you can view
a digital copy of your bill
statement in SmartHub?

