

CONNECTIONS NEWSLETTER

YOUR TRUSTED ENERGY PARTNER

NOVEMBER 2019



ADAMS-COLUMBIA
ELECTRIC COOPERATIVE



A Touchstone Energy® Cooperative



Mark LaMore

United States Air Force
1991-1995
Anchorage, Alaska
F-15 Engines

"Cooperatives have similar principles to the military, and one of those is, our people always come first."



Josh Berger

United States Army
2004-2007
Alaska, Ft Richardson
12 months stationed in Iraq
C84th Engineers

"Working with the linemen at ACEC reminds me a lot of the brotherhood I experienced in the military."



Brian Mattice

United States Air Force
2005-2011
General Mitchell Air
National Guard Base
128th Air Refueling Wing

"Working together to help people, that's what the co-op and the military are all about."

Happy Veterans Day!

This month we're celebrating Veterans Day. We want to say thank you to all veterans, but we're especially proud of our Adams-Columbia Electric Co-op veterans.

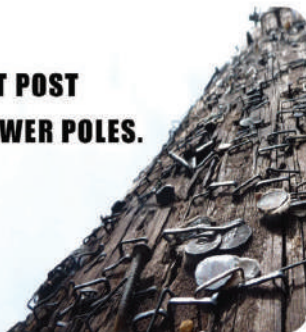
ADAMS-COLUMBIA ELECTRIC COOPERATIVE

Your source for Co-op news and information.

POLE ATTACHMENT

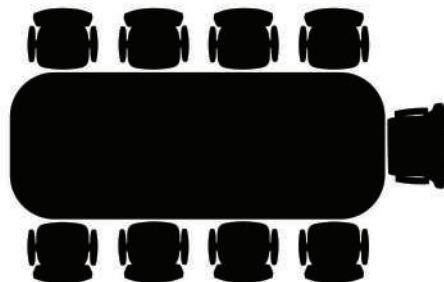
PLEASE DON'T POST SIGNS ON POWER POLES.

Safe
Electricity.org



Did you know attaching items to utility poles can be life-threatening to our linemen? Nails and staples can cause safety boots to become snagged and can even tear the protective clothing lineworkers wear, which is the first line of protection against electric shock. For the safety of all lineworkers, please do not attach anything on our, or any other, utility poles.

MEETING MINUTES



Did you know that you can find a summary of the monthly board meeting minutes on our website and published in the *Wisconsin Energy Cooperative News* magazine? Click the News & Info tab online to see minutes dating all the way back to 2018. Minutes are now published on page 18 of the magazine.

Thank You

Happy Veterans Day to all the servicemen and women who have dedicated themselves to our country. We know we're not alone in saying thank you.

**DID YOU KNOW WE OFFER THE
RESP ENERGY EFFICIENCY LOAN?
CALL US AT (608) 339-5426**

TOYS FOR TOTS DONATIONS

Our yearly toy donation program is underway. It may seem a bit early to be thinking about Christmas, but to ensure toys will get to children in time we need to collect donations early. By the beginning of December, the organizations we partner with in each county are already sorting gifts and making sure each boy and girl will get something on their wish list. If you would like to donate a new, unwrapped toy, look for the Toys for Tots boxes at area businesses or drop toys off in our Friendship office.



Monetary donations: checks can be made out to Toys for Tots with a memo of Friendship, WI. Please mail to ACEC, P.O. Box 70, Friendship, WI 53934, or drop any donation at our Friendship office at 401 E Lake St.

SECURITY UPDATE

Due to a staff retirement, our security and First Call program is now being operated by Krus Fire & Security, with whom we have partnered to provide this service for some time.



608-666-2888

RELIABILITY REPORT

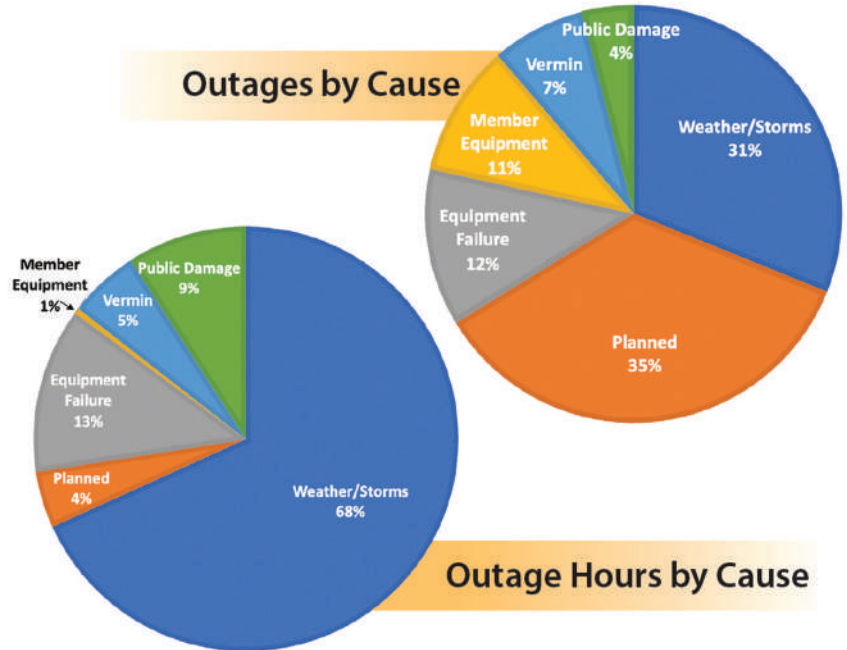
We are happy to report that once again, Adams- Columbia Electric Cooperative members had power 99.98 percent of the time. This number is on trend from previous years, with 2018 at 99.98 percent and 2017 at 99.94 percent. Co-ops generally lead the charge in reliable electricity with both a lower frequency and shorter duration of outages. For this, we can thank our linemen for great storm response time, regular maintenance on our infrastructure, and right-of-way clearing.

Besides weather/storms and regular maintenance— which we call planned outages—there are four other main categories that outages fall into: equipment failure, vermin, public damage, and member-side outages. Member-side outages can be things like issues with a breaker panel or damage to the line running from the meter into your house.

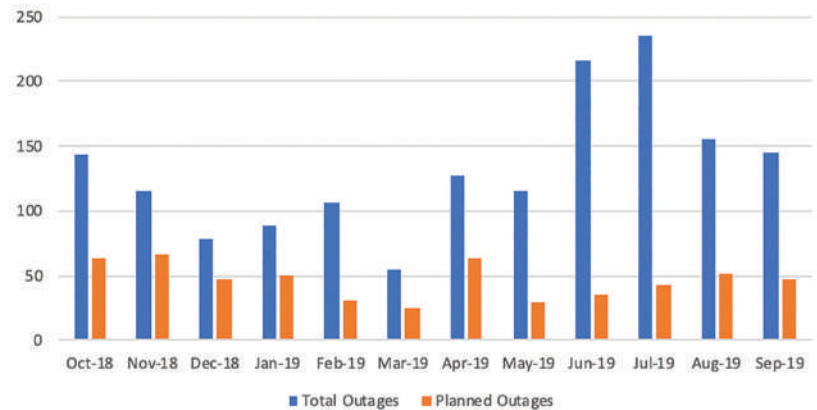
At right you can find charts detailing outages by total hours and outages by cause. You will see that the categories usually do not correspond from chart to chart. For example, a planned outage, where we essentially “turn off” a section of line to safely do maintenance work, is responsible for the highest number of outages. But if you compare this to the hours chart, you will see it accounts for the least number of hours.

We have also included a monthly comparison of the total outage hours and the planned outage hours, which can be seen on the graph at right. The data from this report was collected from October 2018 to September 2019.

Outages by Cause



Outage Comparison



CALENDAR OF EVENTS

DEC 16

Jay's Discussion Days

Visit our CEO, Jay Porter, between 8:00am - 11:00am in Pardeeville - W6290 State Rd 33, and between 1:00pm - 4:00pm in Wautoma - N1519 State Rd 22.

DEC 24
DEC 25

Christmas

Our office will be closed Dec 24-25 for Christmas.

JAN 1

New Year's Day

Our office will be closed Jan 1 for New Years.



facebook.com/ACECWI



@ACECWI



acecwi.com



(800) 831-8629

