

# CONNECTIONS NEWSLETTER

YOUR TRUSTED ENERGY PARTNER

MARCH 2019



ADAMS-COLUMBIA  
ELECTRIC COOPERATIVE



A Touchstone Energy® Cooperative



**Pictured: Front: Jon Gessner-Operations Manager  
Back: Jon Congdon- Operations Asst Manager, Josh Berger – Operations Supervisor, Trevin Jensen, Eric Kitchen, Dustin Hess, Shawn Pietrzak- Operations Supervisor, Duane Moore- Operations Supervisor**

## ADAMS-COLUMBIA ELECTRIC COOPERATIVE

Your source for Co-op news and information.

### LINEMAN GRADUATION

Congratulations to our newest Journeyman Line Technicians: Trevin Jensen, Eric Kitchen, and Dustin Hess. Upon graduation from an Electrical Power Distribution program, these men were hired at Adams-Columbia as apprentices. To become a Journeyman, 8,000 hours of training in the field of line distribution, construction, maintenance and related subjects are required. 7,360 of these hours are on-the-job training and 640 are instructional.

### SCHOLARSHIP

Do you know someone considering a career in linework? Don't forget about our Jon Steinhaus Line Worker Scholarship. This scholarship is available March 1- April 12, 2019. Details and the application can be found on our website under Co-op Programs.



### Member Survey

We ask you to participate in a member survey starting at the end of March. Your voice matters and your feedback is valuable to us. The survey will be done by phone or email and should only take a few minutes. Let us know how we're doing!

**DAYLIGHT SAVINGS! DON'T  
FORGET TO "SPRING FORWARD"  
ON SUNDAY, MARCH 10.**



# 2019 ANNUAL MEETING

Join us Saturday, May 11, at the Adams-Friendship Fine Arts Center. We will begin our 32nd annual meeting at 9:30 a.m. If you plan on attending please RSVP to [acec@acecwi.com](mailto:acec@acecwi.com) or by calling (800) 831-8629 by April 5. Can't make it to the meeting on May 11? Don't forget that our eVote option will be available April 1 – May 10. This option is available to all members via their SmartHub account.

## GET TO KNOW THE CANDIDATES!

There will be a candidate forum from 5:00 - 6:00 p.m. Wednesday, April 3rd at the World War II Center in Wautoma or 5:00 - 6:00 p.m. on Thursday, April 4 at the Westfield Community Center.

You can also read about the candidates in next month's newsletter. A biography for each candidate will be printed in the *Wisconsin Energy Cooperative News* magazine highlighting what they feel they would bring to Adams-Columbia's board if elected.

## CANDIDATES:

### DIRECTOR ELECTIONS

There are three director seats up for election at the 2019 annual meeting. The deadline to submit paperwork to run for the board was February 8 and we now have our official candidates:

#### DISTRICT 2

**Incumbent** Patrick Connolly

**Candidate** Adam Jones

**Candidate** Ethan Olson

#### DISTRICT 3

**Incumbent** Marj Colby

**Candidate** Aaron Hoernke

#### DISTRICT 4

**Incumbent** Lawrence Becker

**Candidate** John Church

**Candidate** Jon Ebert

## NEW METERS

We are installing new meters to improve the efficiency and reliability of our electric system and enhance service to you. For more information see the March issue of *Wisconsin Energy Cooperative News* or [www.acecwi.com](http://www.acecwi.com).

### WHAT'S THE DIFFERENCE BETWEEN THE CURRENT SYSTEM AND THE NEW ONE?

There is very little change between the current system and the new one. Both are comprised entirely of electronic meters, and both systems measure the same types of electric use information.

### THERE ARE THREE MAIN DIFFERENCES:

**1** The first is the new AMI meters report back to ACEC collection points using a dedicated wireless network, while the current system uses the power lines to carry information back to an ACEC collection point. For comparison, the new system works much like a cell phone, while the current system works like a land line telephone.

**2** The second and exciting difference is the new meters can automatically signal cooperative monitoring equipment of an outage, allowing for more efficient response to outages and problems with the distribution system.

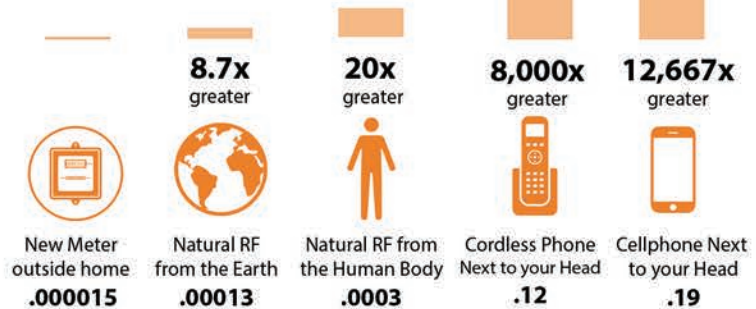
**3** And the third is most meters will have remote disconnect capabilities, where only a few do in the current system.

### ARE THEY SAFE?

The new meters use Radio Frequency or RF to communicate information to our office. Some people have asked if RF levels from the meters are safe. The short answer is, yes. The RF level from the meter is low; we've put together a graph of levels of RF in everyday items for comparison.

The Federal Communications Commission, FCC, has a safety exposure limit of 1 milliwatt per square centimeter (mW/cm<sup>2</sup>). To reach this limit you would have to be within 1 foot of 7,000 meters all communicating at the same time.

### RF LEVELS GRAPH



\*The measurements on the graph are based on the FCC average exposure standard of 30 minutes. Measurements are listed in mW/cm<sup>2</sup>.

MAR 21

### Jay's Discussion Days

Visit our CEO, Jay Porter, between 8:00am - 11:00am in Wautoma - N1519 State Rd 22, and between 1:00pm - 4:00pm in Pardeeville - W6290 State Rd 33.

## CALENDAR OF EVENTS



[facebook.com/ACECWI](https://facebook.com/ACECWI)



@ACECWI



[acecwi.com](http://acecwi.com)



(800) 831-8629



smart hub