

# Adams County

Wood County

Portage County

Waushara County

Juneau County

Marquette County

Sauk County

Friendship  
Adams

Wisconsin Dells

State Hwy 21

State Hwy 13

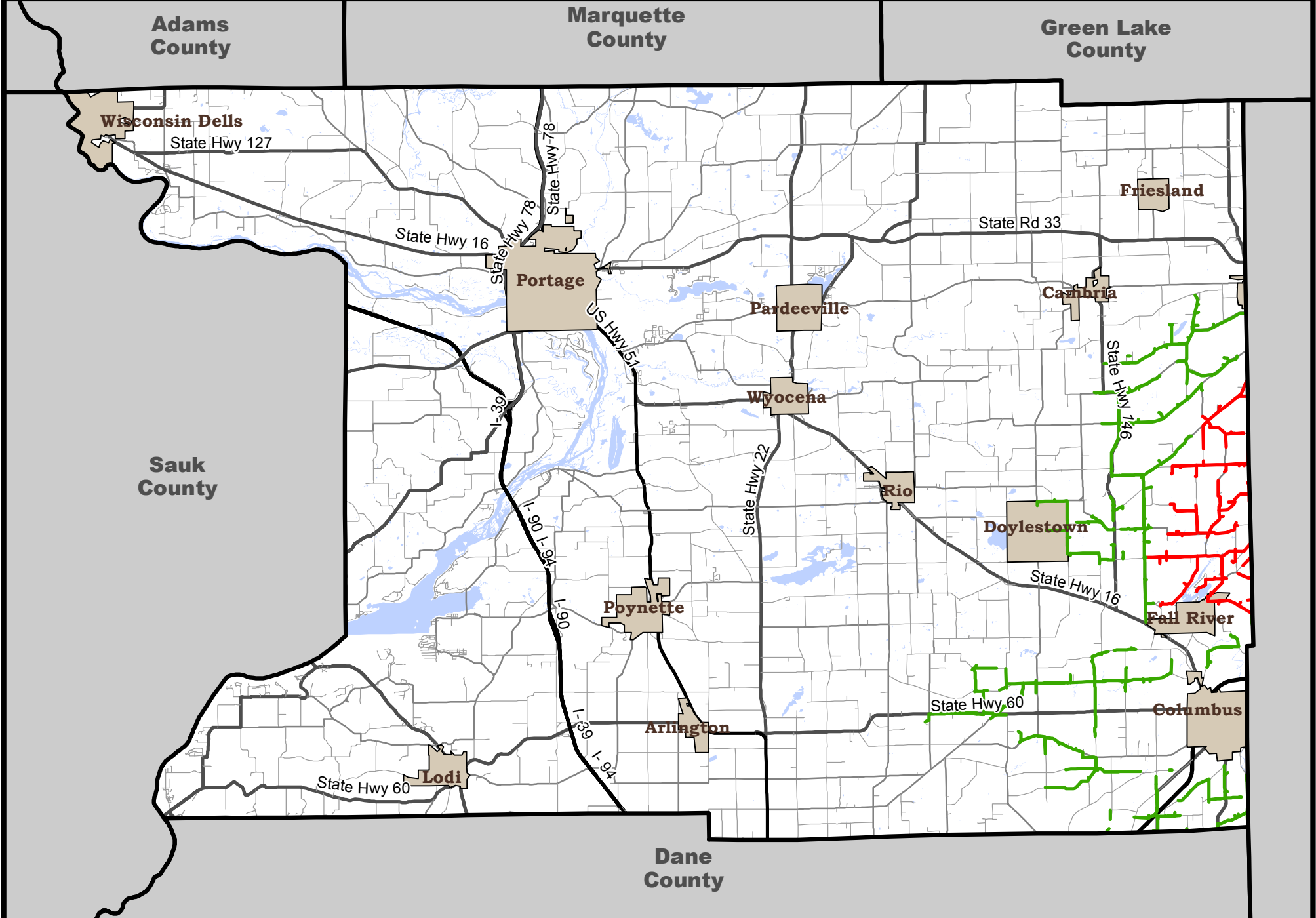
State Hwy 82



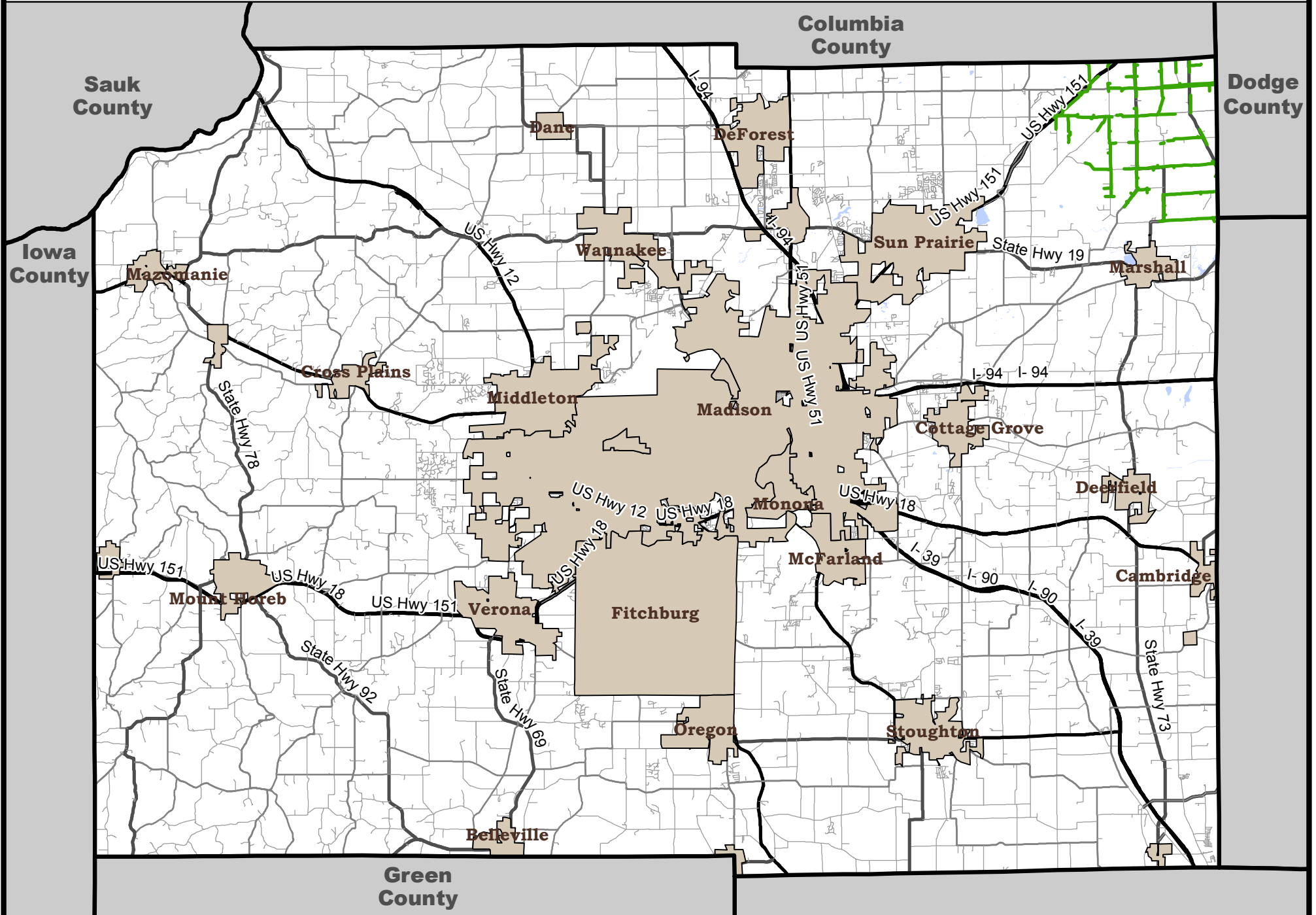
Adams-Columbia Electric Cooperative  
2017 Right of Way Maintenance

- Clearing
- Dead Tree
- Herbicide

# Columbia County



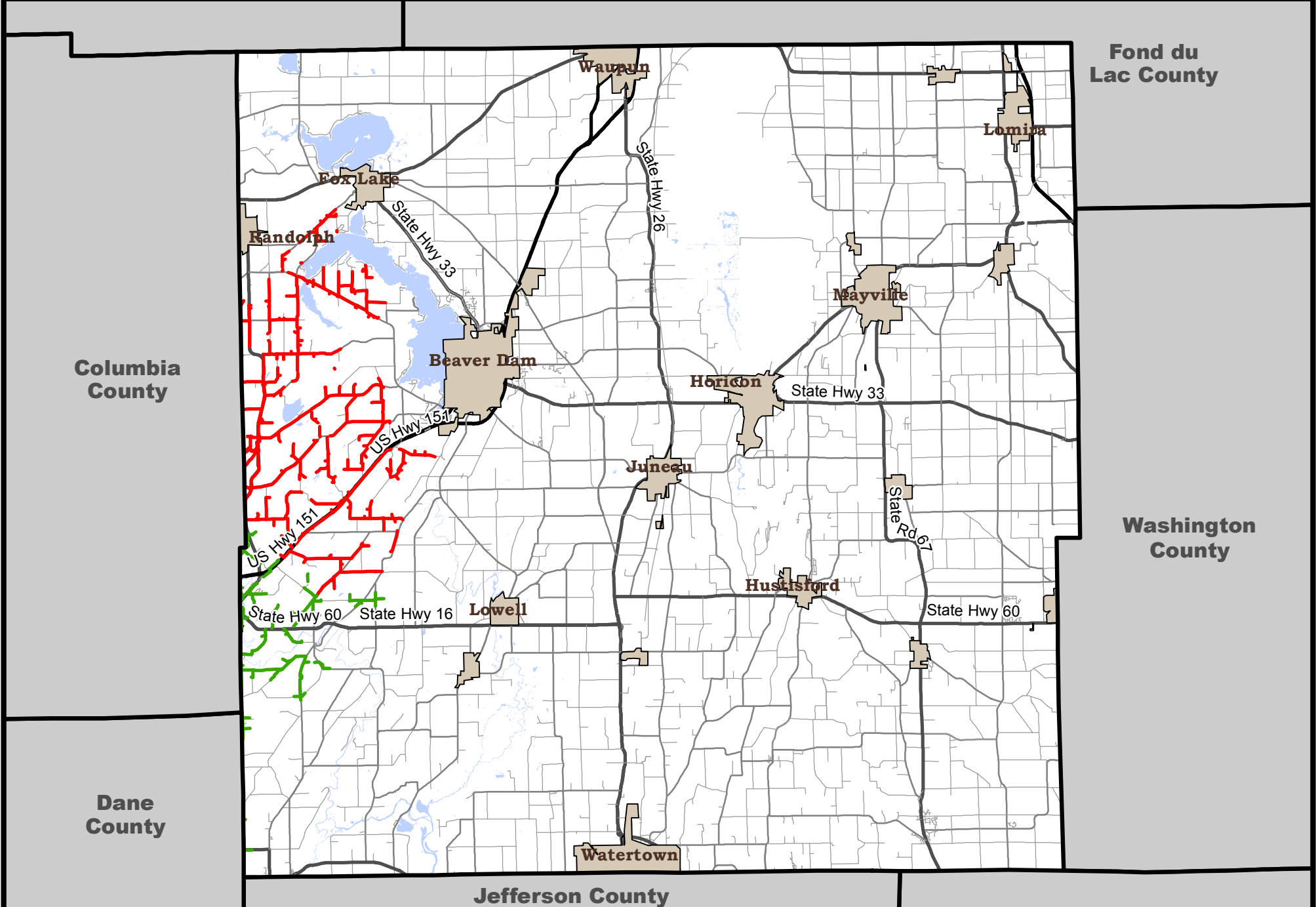
# Dane County



Adams-Columbia Electric Cooperative  
2017 Right of Way Maintenance

— Clearing — Herbicide — Dead Tree

# Dodge County



Columbia County

Fond du Lac County

Washington County

Dane County

Jefferson County

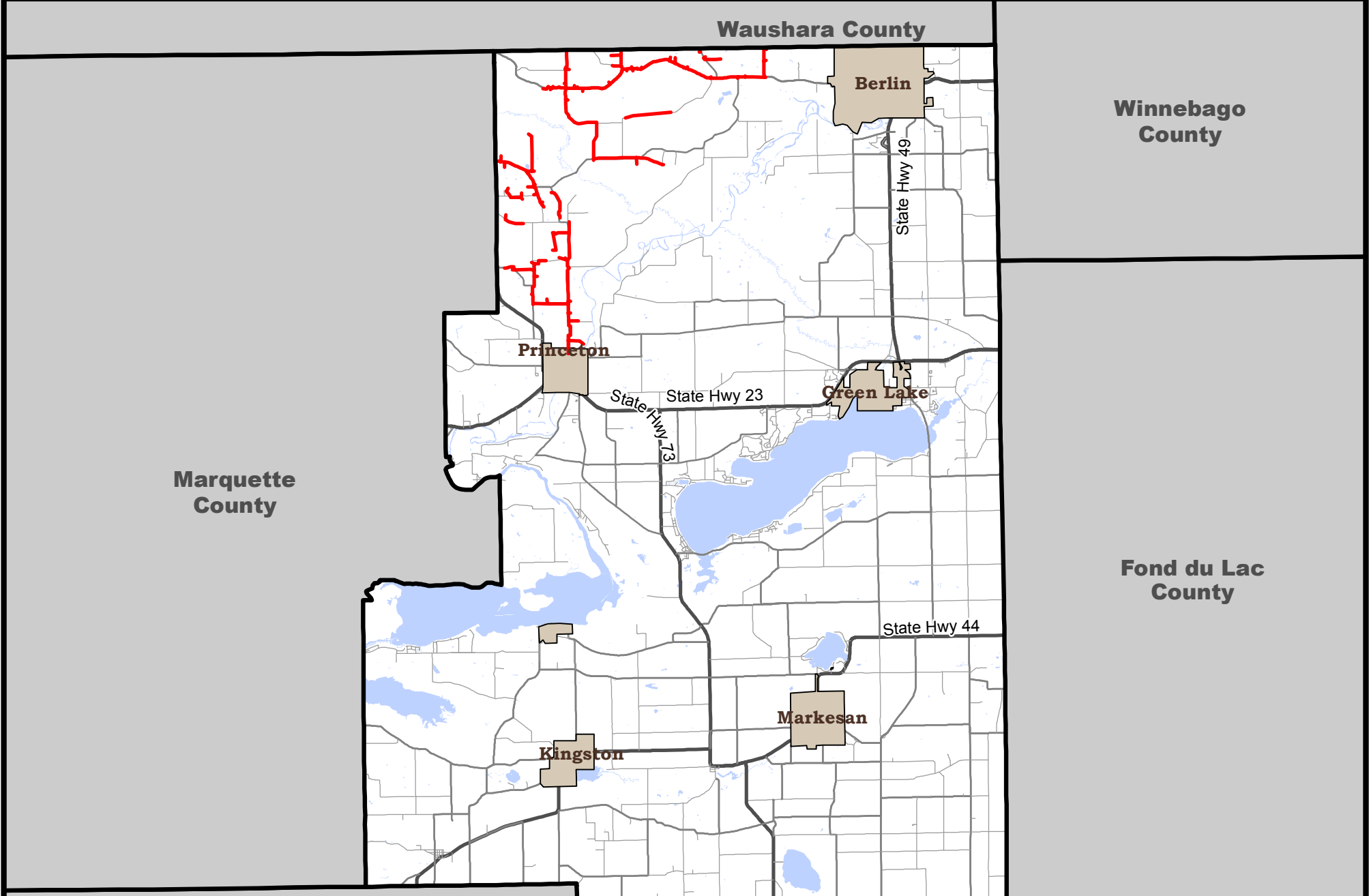


Adams-Columbia Electric Cooperative  
2017 Right of Way Maintenance

— Clearing — Herbicide — Dead Tree

1/30/2017 JH

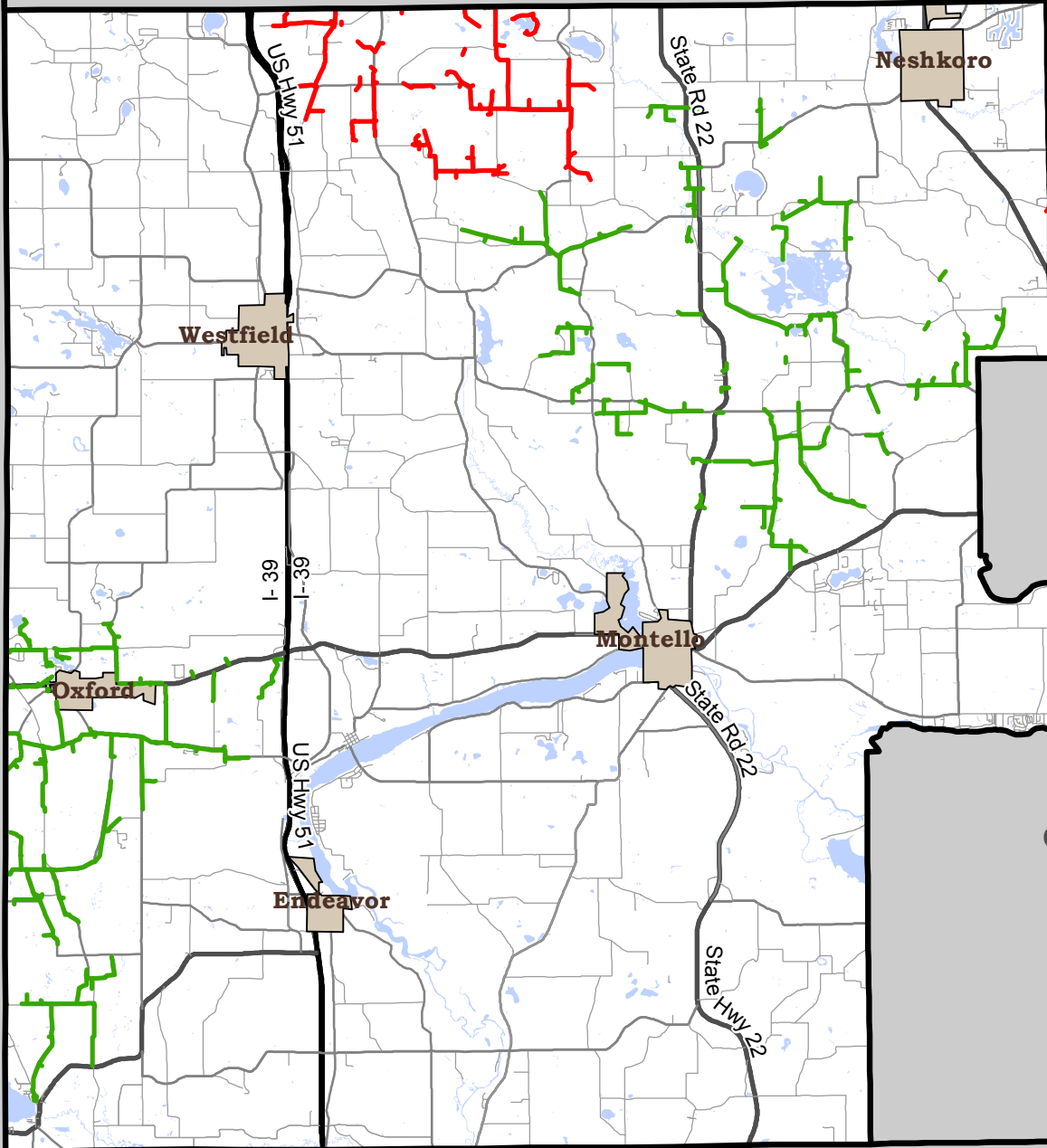
# Green Lake County



# Marquette County

Waushara County

Adams County



Green Lake County



Adams-Columbia Electric Cooperative  
2017 Right of Way Maintenance

— Clearing — Herbicide — Dead Tree

1/30/2017 JH

# Portage County

Marathon County

Shawano County

Wood County

Waupaca County

Juneau County

Adams County

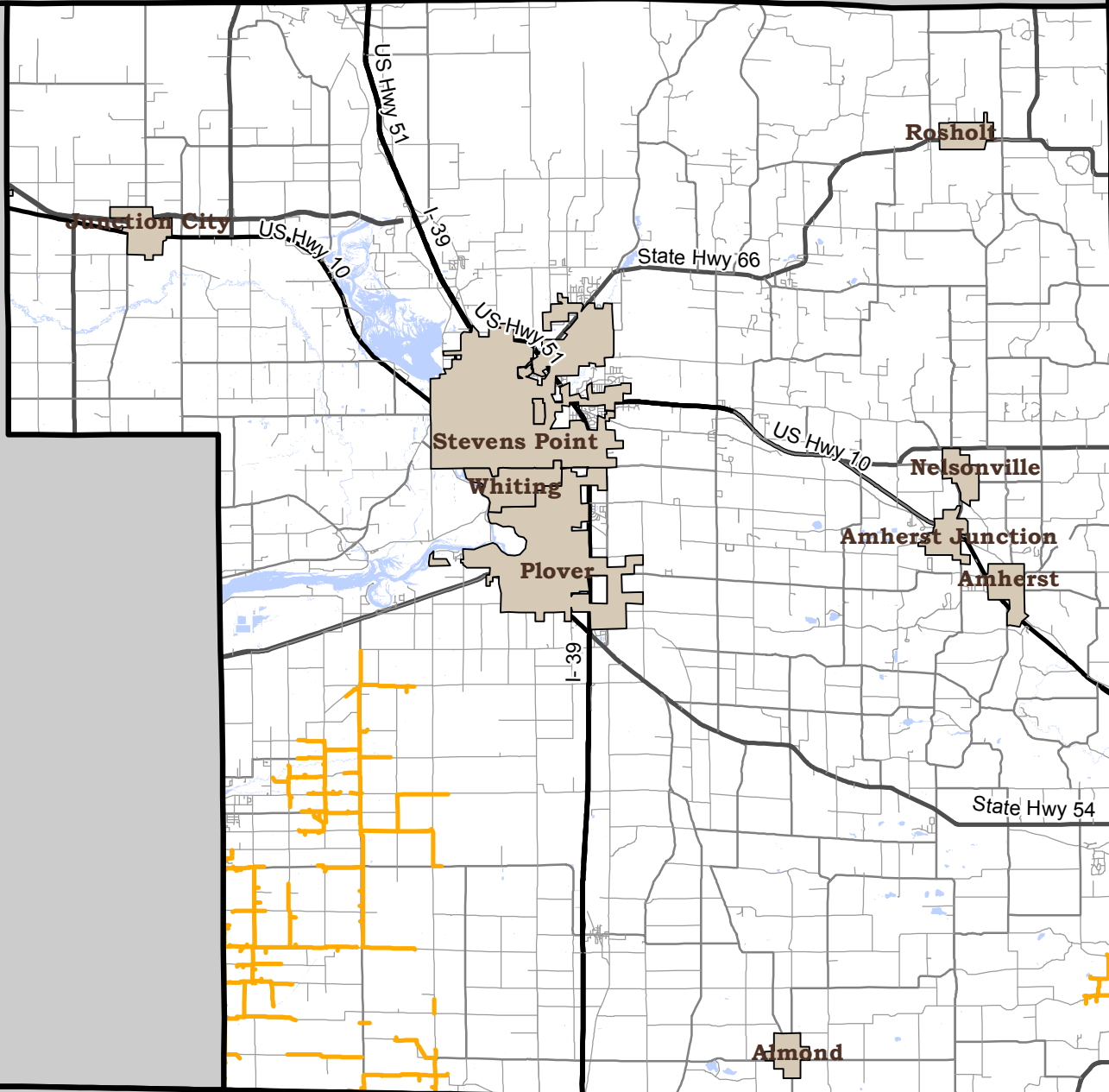
Waushara County



Adams-Columbia Electric Cooperative  
2017 Right of Way Maintenance

— Clearing — Herbicide — Dead Tree

1/30/2017 JH



# Waupaca County

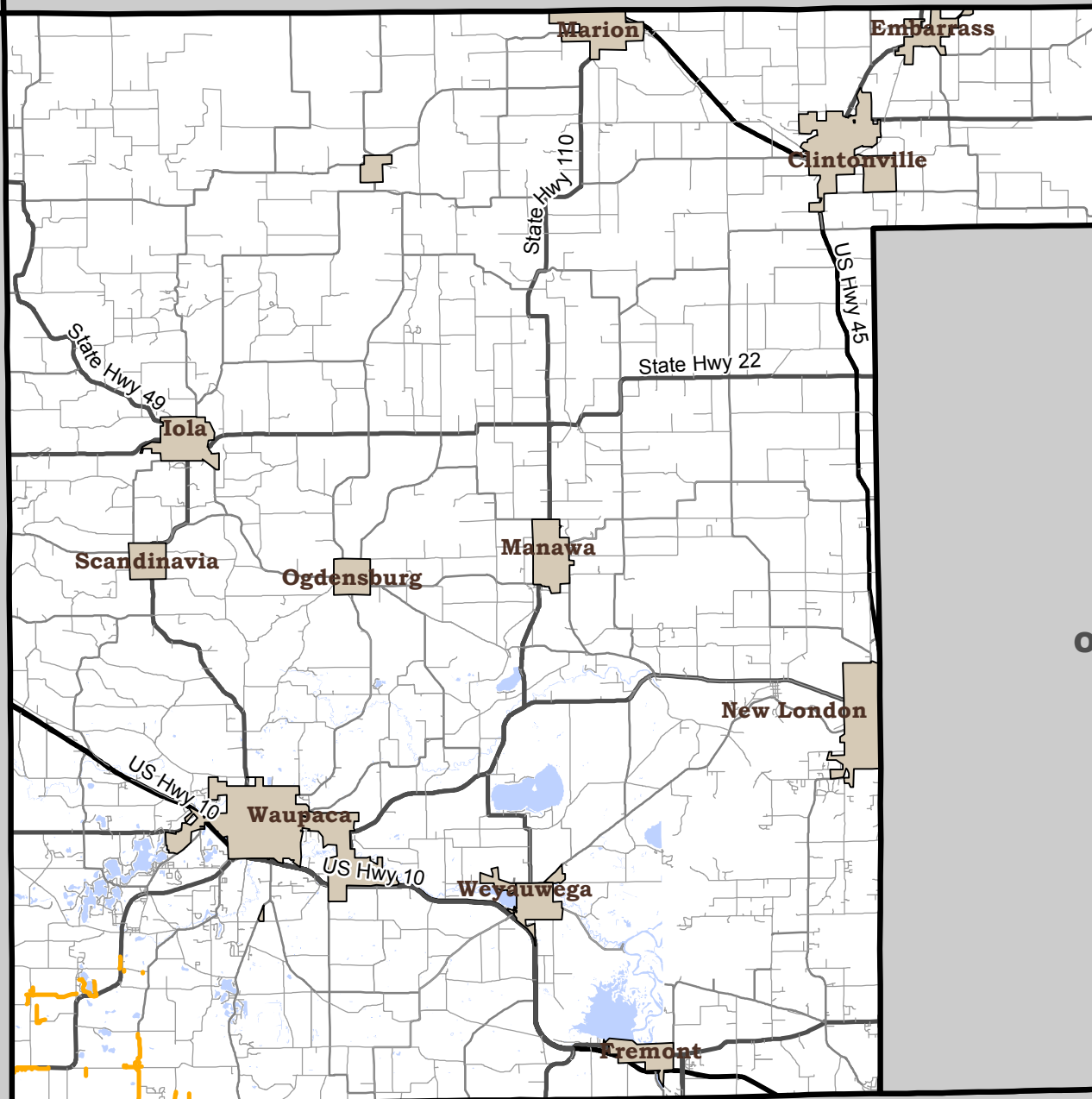
Marathon County

Shawano County

Portage County

Outagamie County

Waushara County



Adams-Columbia Electric Cooperative  
2017 Right of Way Maintenance

— Clearing — Herbicide — Dead Tree

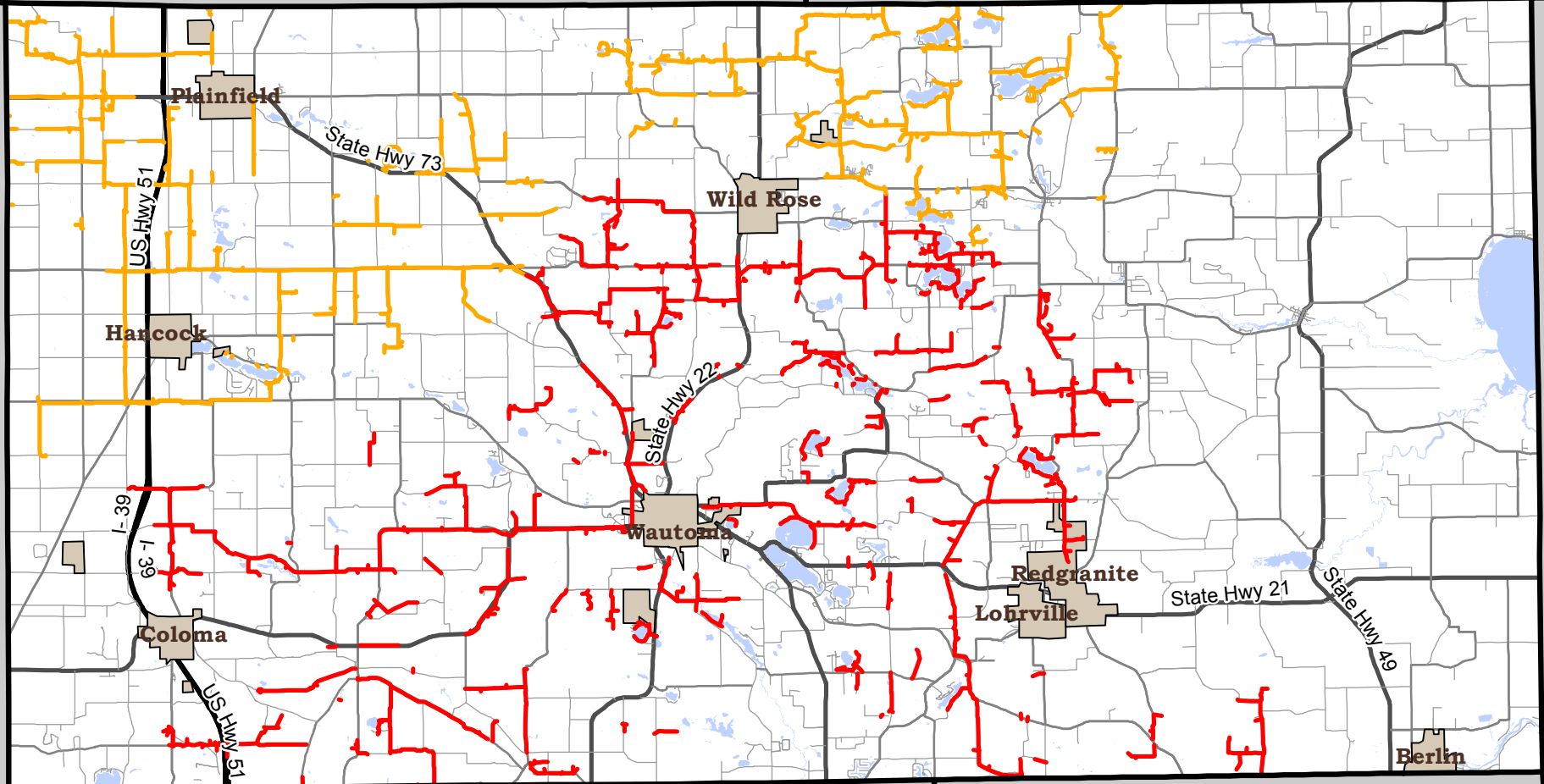
1/30/2017 JH



# Waushara County

Portage  
County

Waupaca  
County



Marquette  
County

Green  
Lake  
County



Adams-Columbia Electric Cooperative  
2017 Right of Way Maintenance

— Clearing — Herbicide — Dead Tree

1/30/2017 JH